

G R E A T H I G H S C H O O L S M A D E G R E A T E R

G R E A T E R E G G H A R B O R
R E G I O N A L H I G H S C H O O L D I S T R I C T



Absegami High School

Oakcrest High School

Presentation of Annual District Budget 2007-2008

Thomas Grossi

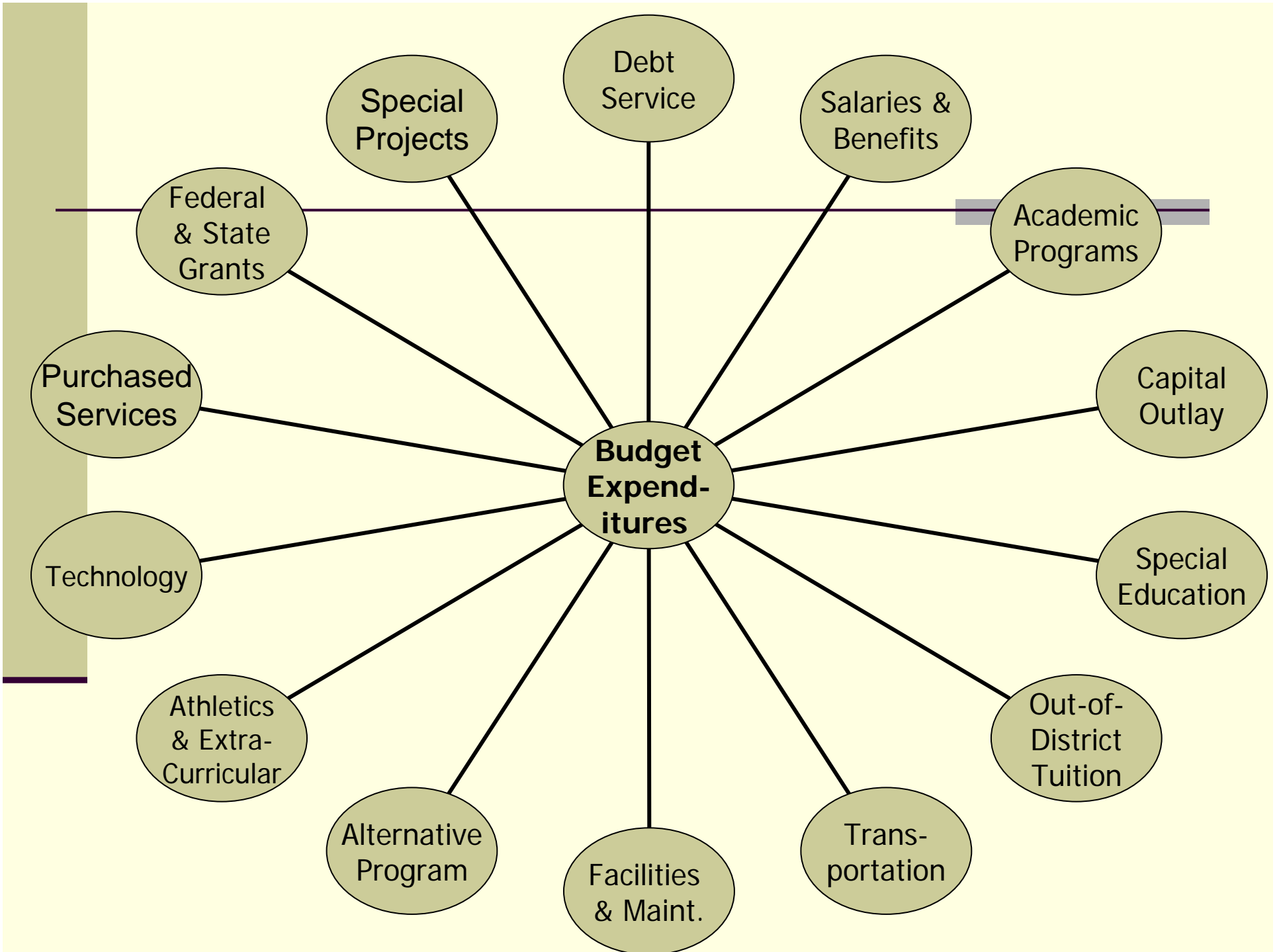
School Business Administrator

Steven Ciccariello, Ed.D.

Assistant Superintendent

Priorities

- Provide for a growing student population.
- Maintain district compliance with NCLB and IDEA federal and state mandates.
- Continue to evaluate alternative methods of providing handicapped education services at lower costs.
- Continue to control costs of instructional materials, equipment, supplies and textbooks.
- Provide for the continued maintenance and modernization of existing district facilities.
- Stabilize tax rates.
- Maintain co-curricular, extra-curricular, academic tutoring, and athletic programs district wide.
- Continue the transition to core curriculum content standards and achieving adequate yearly progress.
- Maintain the district alternate program at an off-campus location.
- Provide technology experiences and opportunities for students and staff as delineated in the District Technology Plan.
- Maintain Distance Learning opportunities for students.
- Maintain district commitment to professional development.
- Complete renovations of the Oakcrest High School Auditorium.
- Maintain the School-to-Careers program for at risk special education students in the district.



State Aid Summary

Increase in State Aid for 2007-2008

\$ 719,950

Increase in Various Tuition Costs	2007-08	2006-07	Increase
Special Ed. Tuition – Private Schools	\$2,107,501	\$1,862,586	\$244,915
Atlantic Co Spec Services Dist Tuition	\$2,205,478	\$2,108,397	\$ 97,081
Atlantic Co Vocational District Tuition *	\$ 375,000	\$ 300,000	\$ 75,000
Totals	\$4,687,979	\$4,270,983	\$416,996

* Before prior year tuition adjustments.

Budget Summary 2007-08

General Fund	\$ 55,749,411
Special Revenue Fund	\$ 1,122,478
Debt Service Fund	\$ 1,311,207
Total	\$ 58,183,096

Proposed Expenditures 2007-2008

Current Expense	\$ 54,480,341
Funds for the operation of the schools such as salaries, books, materials, and the maintenance of the facilities.	
Capital Outlay	\$ 923,730
Funds for equipment and renovations.	
Federal Projects	\$ 905,669
These funds are to implement NCLB, IDEA, and other special projects.	
Debt Service Funds	\$ 1,311,207
These funds pay for the debt service on the Absegami addition and the Absegami and Oakcrest improvements.	

Proposed Expenditures

Continued

Supplemental Aid	\$	163,980
State funding used directly for support of district alternative program.		
Charter School Tuition	\$	334,340
Charter school tuition costs.		
Special Schools	\$	11,000
Funding of adult school and summer school programs		
Non Public Aid/Chapters 192-193	\$	52,829
State funding used for support of Non-Public Students		
Total Expenditures	\$	58,183,096

Anticipated Revenues

2007-2008

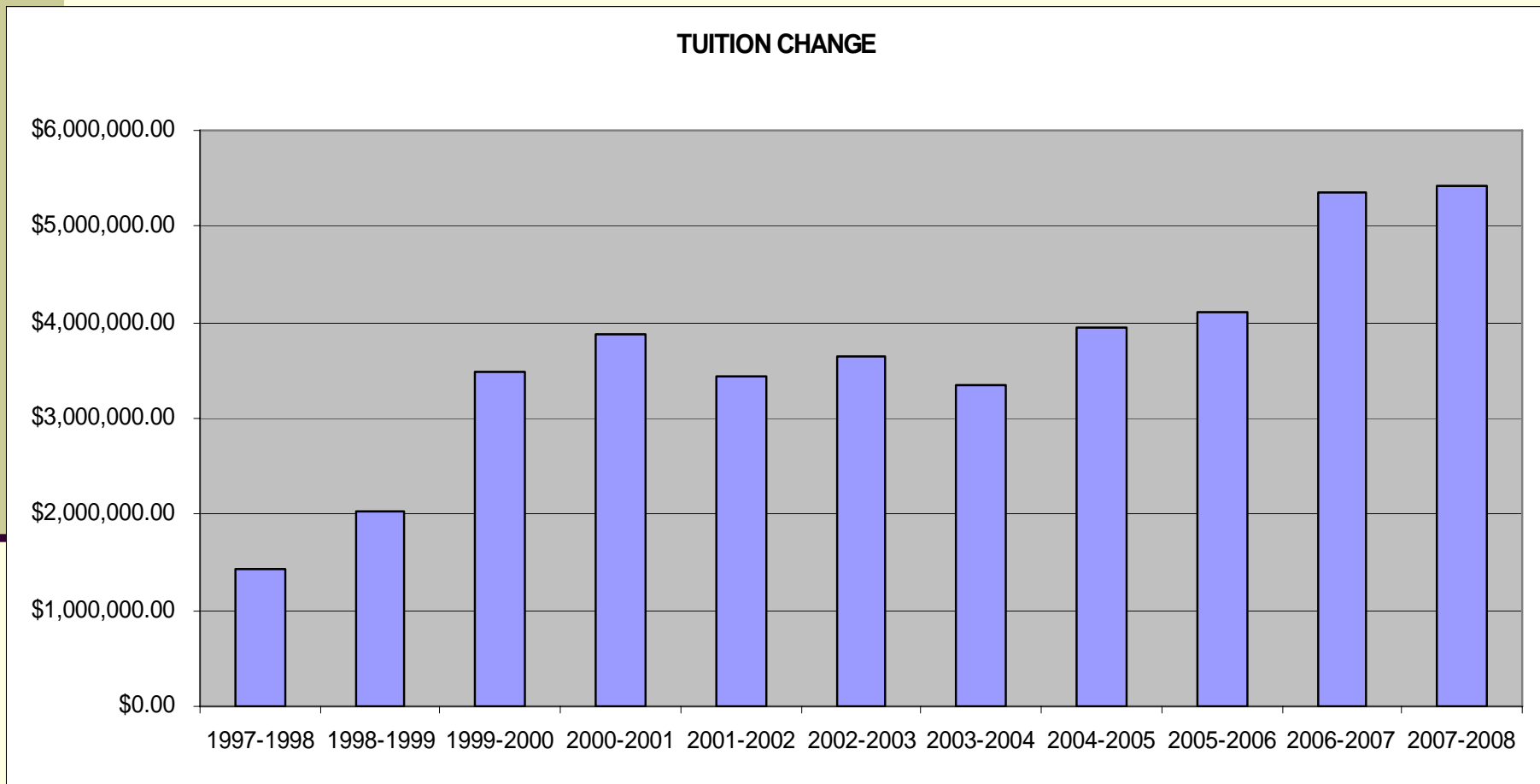
Budgeted Fund Balance	\$ 3,456,329
From fund balance of 2006-2007 budget. (includes deposit in capital reserve)	
Local Sources	\$ 27,761,252
From local taxes, tuition, transportation fees, gate receipts, rental of buildings, and interest on investments.	
State Sources	\$ 24,531,830
Core curriculum, transportation, special education, bilingual state aid, and consolidated aid.	
Special Revenue-State	\$ 216,809
State funding for supplemental, non-public and Chapters 192-193 aid.	

Anticipated Revenues

Continued

Federal Sources	\$	905,669
Federal aid to implement NCLB, IDEA, and other special projects.		
Debt Service	\$	52,559
Fund balance.		
Local Debt Service	\$	550,208
Local tax revenues for the construction costs for Absegami addition and Oakcrest improvements.		
State Debt Service	\$	708,440
State aid for the construction costs of the Absegami addition and the Absegami and Oakcrest improvements.		
Total Anticipate Revenues	\$	58,183,096

Tuition Out History



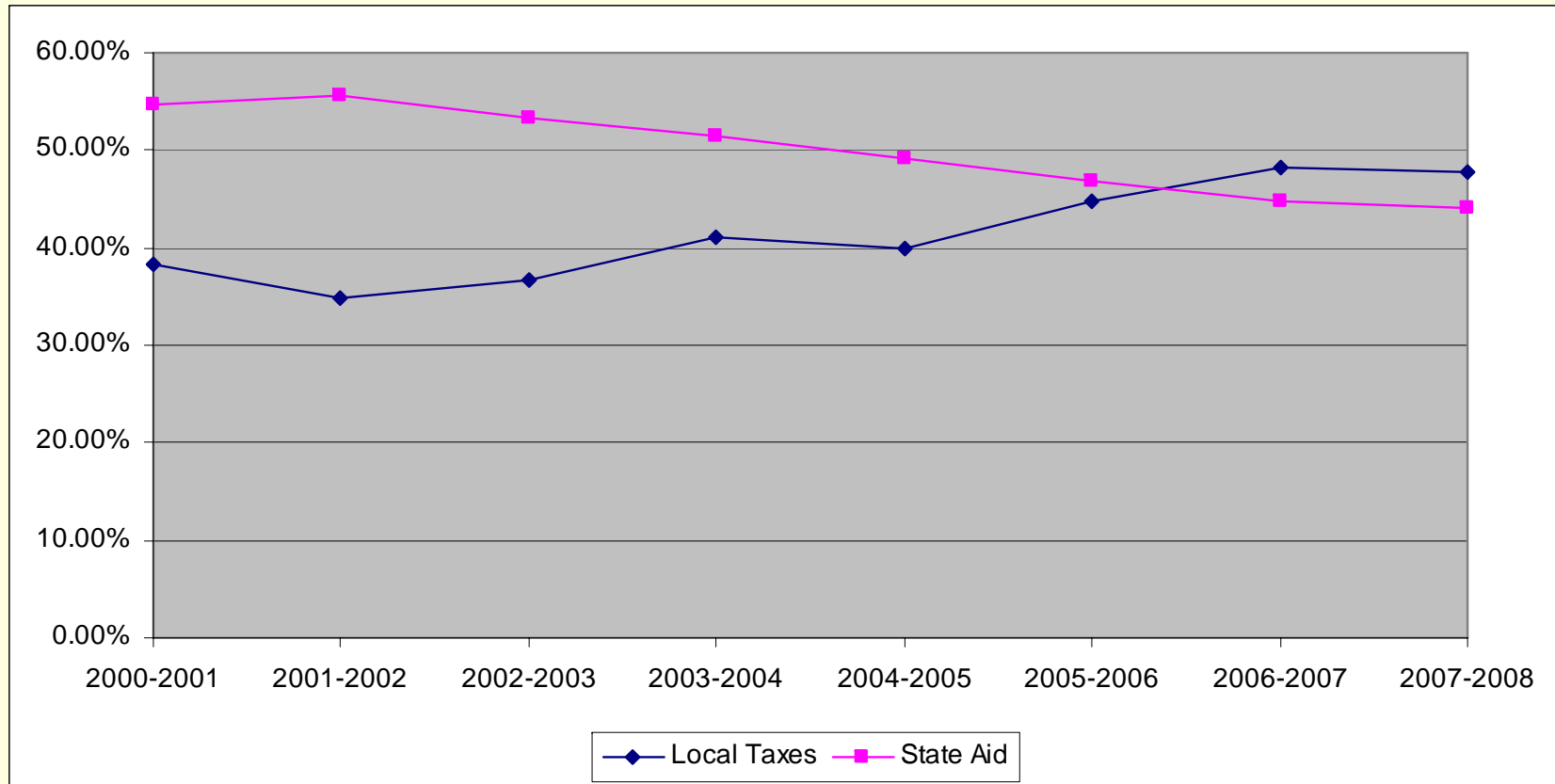
STATE AID VERSUS LOCAL TAX

PERCENTAGE OF GENERAL FUND BUDGET

	2000-2001	2001-2002	2002-2003	2003-2004	2004-2005	2005-2006	2006-2007	2007-2008
Local Taxes	38.24%	34.94%	36.78%	41.04%	39.85%	44.66%	48.33%	47.77%
State Aid	54.74%	55.54%	53.41%	51.38%	49.08%	46.90%	44.85%	44.00%

AID VERSUS LOCAL TAX

PERCENTAGE IN BUDGET



2007-2008 Budget Increase Over 2006-2007

4.43% Increase

Taxation Egg Harbor City

Regional Tax Rate 1997	0.7496
Regional Tax Rate 1998	0.7356
Regional Tax Rate 1999	0.6723
Regional Tax Rate 2000	0.6723
Regional Tax Rate 2001	0.6819
Regional Tax Rate 2002	0.7498
Regional Tax Rate 2003	0.8728
Regional Tax Rate 2004	0.8806
Regional Tax Rate 2005	0.9619
Regional Tax Rate 2006	0.4329
Regional Tax Rate 2007	0.4537
Tax Rate Increase/(Decrease)	0.0208
Ten Year Tax Change	(0.2959)
Average change per year	(0.0296)

*Please note that Egg Harbor City has gone through a revaluation in 2006.

Taxation Galloway Township

Regional Tax Rate 1997	0.5926
Regional Tax Rate 1998	0.5608
Regional Tax Rate 1999	0.5638
Regional Tax Rate 2000	0.5317
Regional Tax Rate 2001	0.5039
Regional Tax Rate 2002	0.5320
Regional Tax Rate 2003	0.5844
Regional Tax Rate 2004	0.6056
Regional Tax Rate 2005	0.6948
Regional Tax Rate 2006	0.7493
Regional Tax Rate 2007	0.7357
Tax Rate Increase/(Decrease)	(0.0136)
Ten Year Tax Change	0.1431
Average Change Per Year	0.0143

Taxation Hamilton Township

Regional Tax Rate 1997	0.6261
Regional Tax Rate 1998	0.6161
Regional Tax Rate 1999	0.6019
Regional Tax Rate 2000	0.5668
Regional Tax Rate 2001	0.5263
Regional Tax Rate 2002	0.5501
Regional Tax Rate 2003	0.6260
Regional Tax Rate 2004	0.5856
Regional Tax Rate 2005	0.6384
Regional Tax Rate 2006	0.7266
Regional Tax Rate 2007	0.7592
Tax Rate Increase/(Decrease)	0.0326
Ten Year Tax Change	0.1331
Average Change Per Year	0.0133

Taxation Mullica Township

Regional Tax Rate 1997	0.5849
Regional Tax Rate 1998	0.5613
Regional Tax Rate 1999	0.5536
Regional Tax Rate 2000	0.5393
Regional Tax Rate 2001	0.5430
Regional Tax Rate 2002	0.6072
Regional Tax Rate 2003	0.6844
Regional Tax Rate 2004	0.6421
Regional Tax Rate 2005	0.6505
Regional Tax Rate 2006	0.7439
Regional Tax Rate 2007	0.7837
Tax Rate Increase/(Decrease)	0.0398
Tenn Year Tax Change	0.1988
Average Change Per Year	0.0199

Tax Rate Impact of 2007-2008 Budget

	2007-08 Tax Rate Increase/(Decrease)	Average Assessed Home Value*	Increase in Tax Bill
Egg Harbor City	\$0.0208	\$185,000	\$38.48
Galloway Township	(\$0.0136)	\$121,750	(\$16.56)
Hamilton Township	\$0.0326	\$102,021	\$33.26
Mullica Township	\$0.0398	\$112,075	\$44.61

*** Information obtained from local municipality**

Allocation of Regional Taxes

	Regional Equalized Valuation October 13, 2006		Regional Equalized Valuation October 15, 2005		Increase/ Decrease (-)
Egg Harbor City	\$ 112,555,052	5.0022161%	\$ 88,545,564	4.9184178%	0.08%
Galloway Township	\$ 1,157,410,303	51.4380862%	\$ 943,199,074	52.3916383%	-0.95%
Hamilton Township	\$ 795,913,027	35.3722814%	\$ 625,185,870	34.7270400%	0.65%
Mullica Township	\$ 184,225,362	8.1874164%	\$ 143,355,005	7.9629039%	0.22%
Total	\$ 2,250,103,744	100.0000000%	\$ 1,800,285,513	100.0000000%	

Allocation of Regional Taxes Continued

Where does the Regional Equalized Valuation come from?

Example Mullica Township

Aggregate Assessed Value of Municipality	\$279,433,200
Divided by:	
County Ratio of Aggregate Assessed Value to True Value	<u>50.23%</u>
Aggregate True Value of Real Property	\$556,307,386
Plus:	
Assessed Value of Personal Property	<u>\$ 1, 106,721</u>
Equalized Valuation	\$557,414,107
Multiplied by:	
Percentage of Township Students in High School	<u>33.05%</u>
Regional Equalized Valuation	\$184,225,362

Impact of S1701 on 2007-2008 Annual Budget

S1701 was signed into law on July 1, 2004 by Governor McGreevy, retroactive to April 2004.

S1701 Establishes:

1. Spending caps on school budget increases.
2. Reductions of surplus balances.
3. Decreases in capital reserve accounts.
4. Caps on administrative costs.
5. A requirement of state approval for line item transfers in school budgets.

S1701 Effects on Unreserved Fund Balance

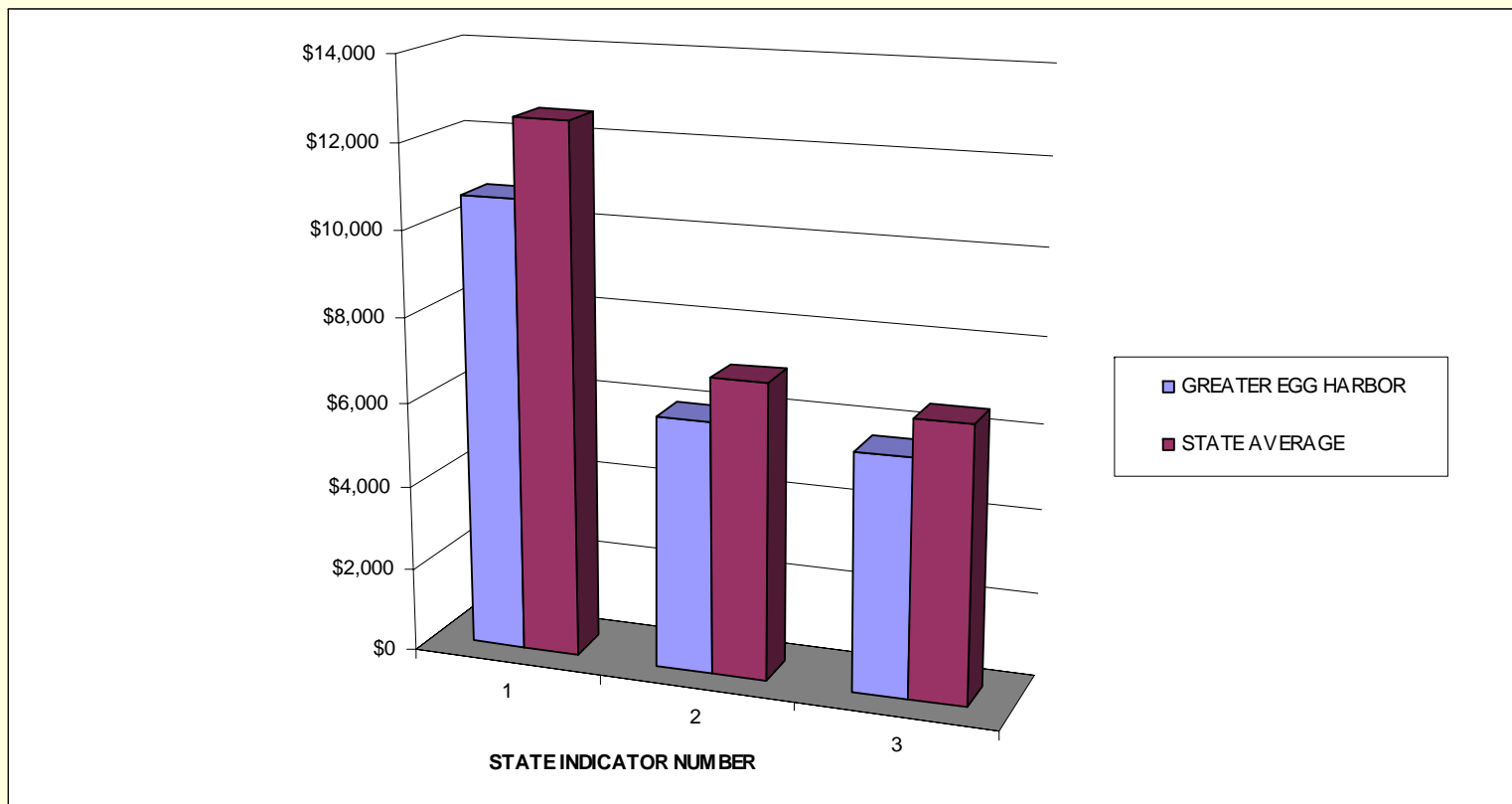
	2002/2003	2003/2004	2004/2005	2005/2006	2006/2007	2007/2008
General Fund Surplus Budgeted as Revenue	\$2,950,604	\$2,458,960	\$4,000,588	\$3,925,728	\$2,518,069	\$3,156,329
Allowable Unreserved Fund Balance	6%	6%	3%	2%	2%	2%

COMPARATIVE SPENDING 2006-2007

Category 1	Total Cost Per Pupil
Category 2	Total Classroom Cost Per Pupil
Category 3	Classroom Salary Cost Per Pupil
Category 4	Supply and Textbook Cost Per Pupil
Category 5	Purchased Services Cost Per Pupil
Category 6	Support Services Cost Per Pupil
Category 7	Support Services Salaries Cost Per Pupil
Category 8	Administrative Cost Per Pupil
Category 9	Administrative Salary Cost Per Pupil
Category 10	Operations and Maintenance Cost Per Pupil
Category 11	Operations and Maintenance Salary Cost Per Pupil
Category 12	Food Service Cost Per Pupil
Category 13	Extracurricular Cost Per Pupil

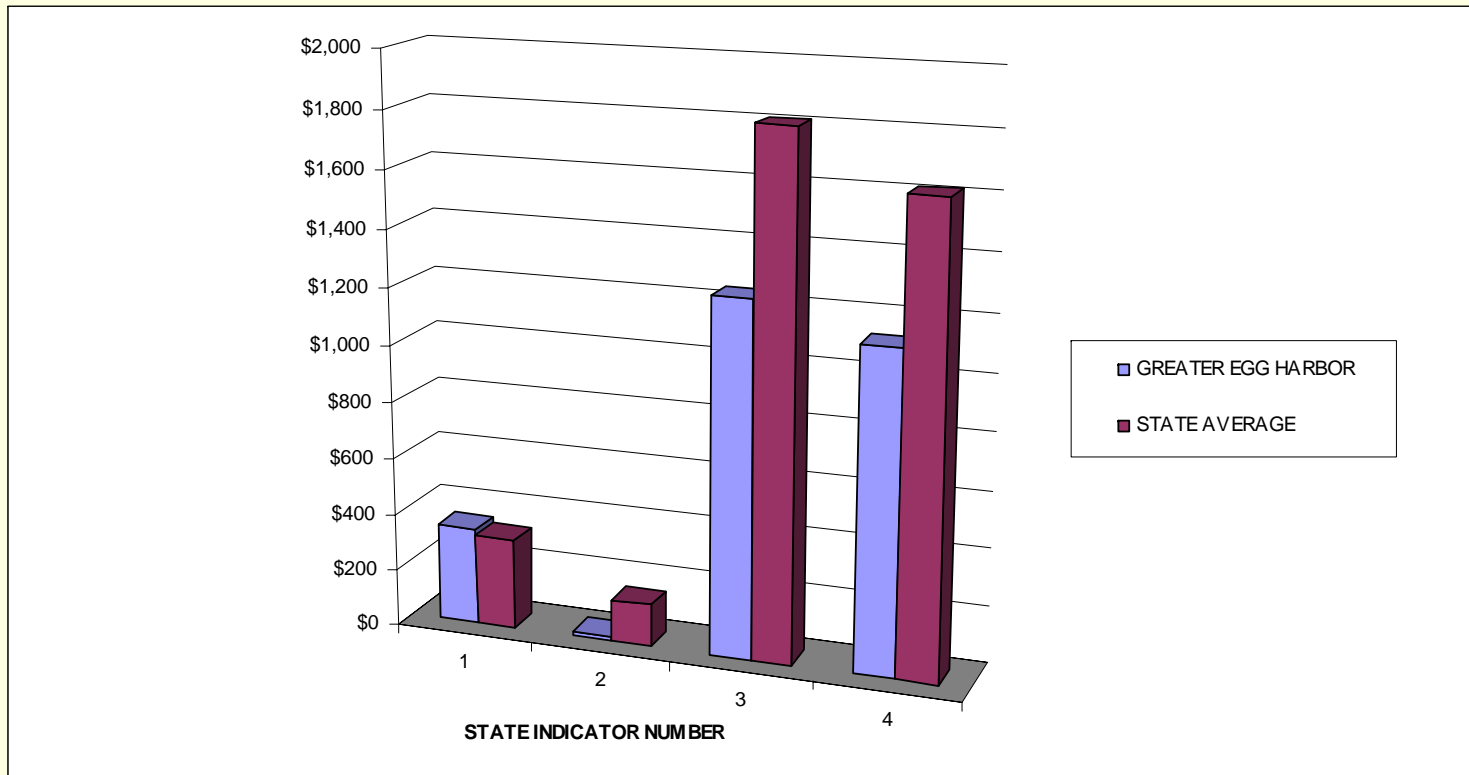
Average Cost Per Pupil Comparison GEHRHSD and NJ State Averages

	Cost Per Pupil	Classroom Cost Per Pupil	Classroom Salary Cost Per Pupil
	1	2	3
District Cost	10,708	5,974	5,617
State Average	12,552	6,983	6,515



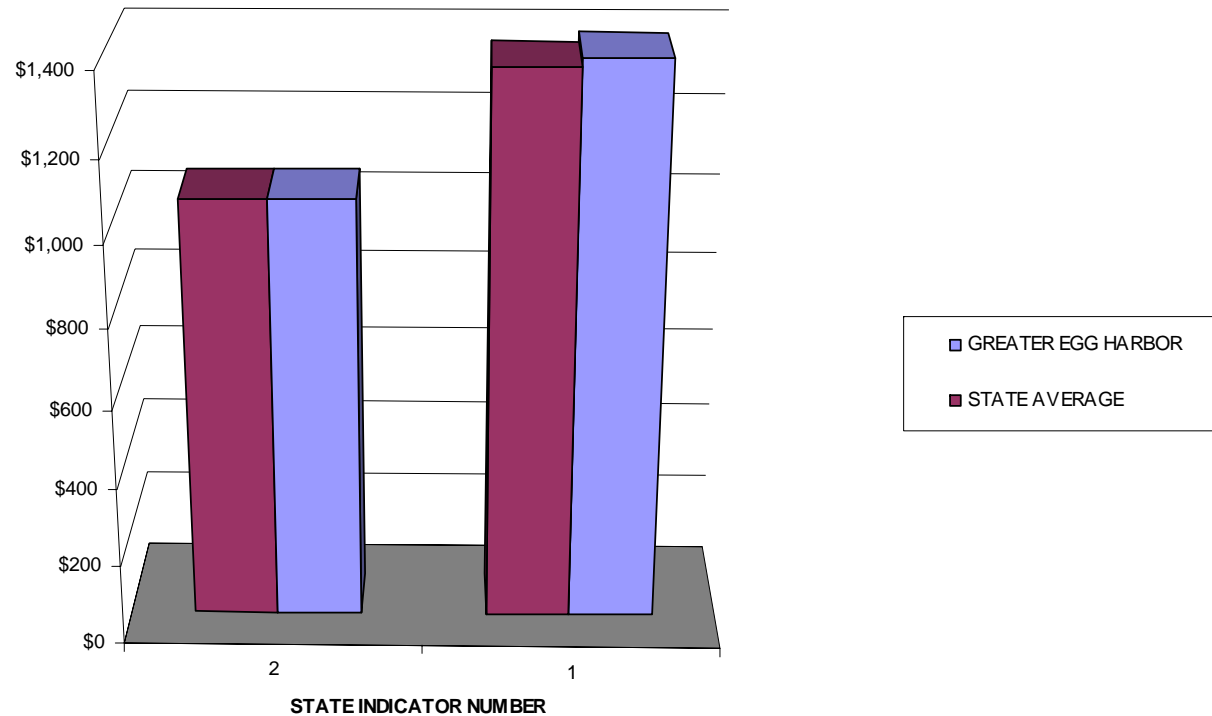
Average Cost Per Pupil Comparison GEHRHSD and NJ State Averages

	Supply/Textbook Cost Per Pupil	Purchased Services Cost Per Pupil	Support Services Cost Per Pupil	Support Services Salaries Cost Per Pupil
	1	2	3	4
District Cost	343	14	1,239	1,123
State Average	320	149	1,809	1,617



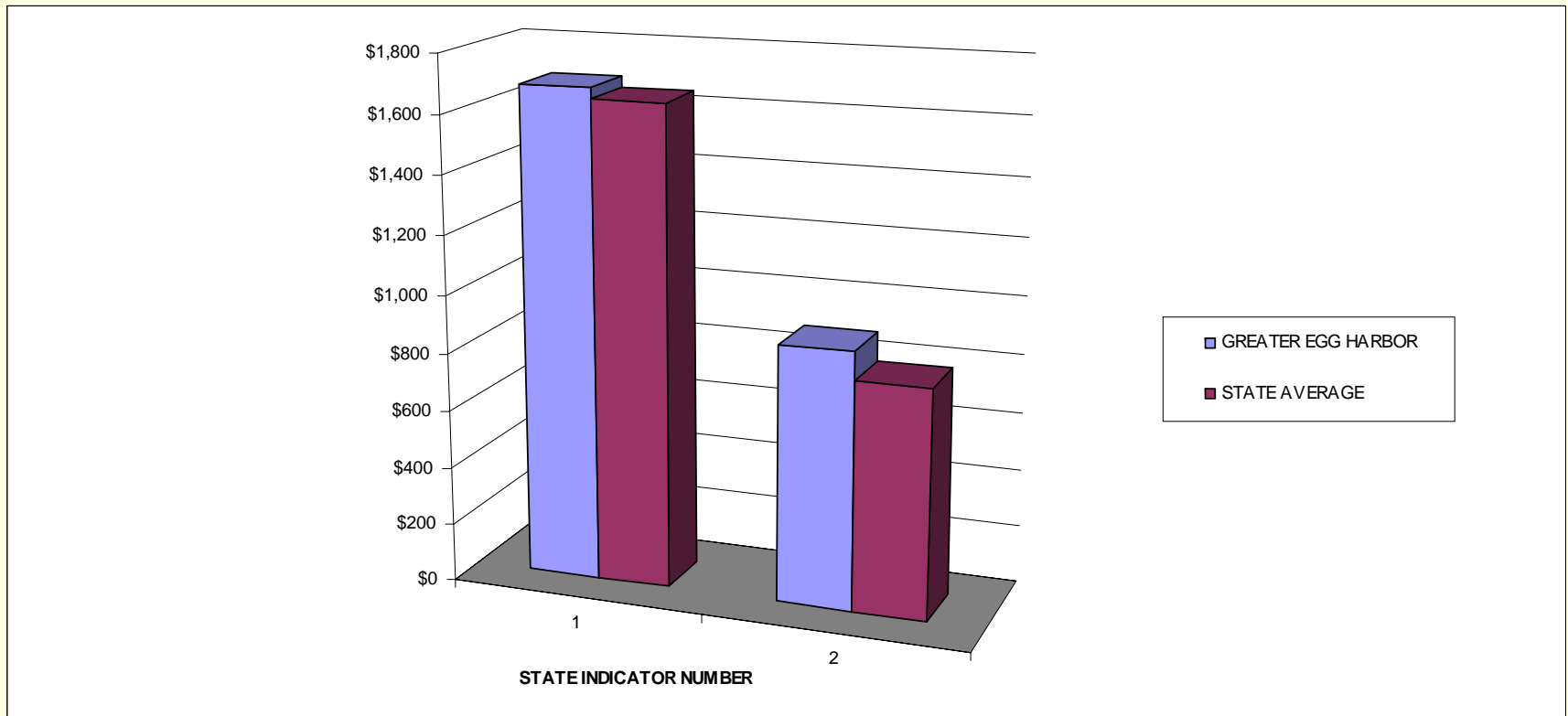
Average Cost Per Pupil Comparison GEHRHSD and NJ State Averages

	Administrative Cost Per Pupil	Administrative Salary Cost Per Pupil
	1	2
District Cost	1,389	1,058
State Average	1,367	1,057



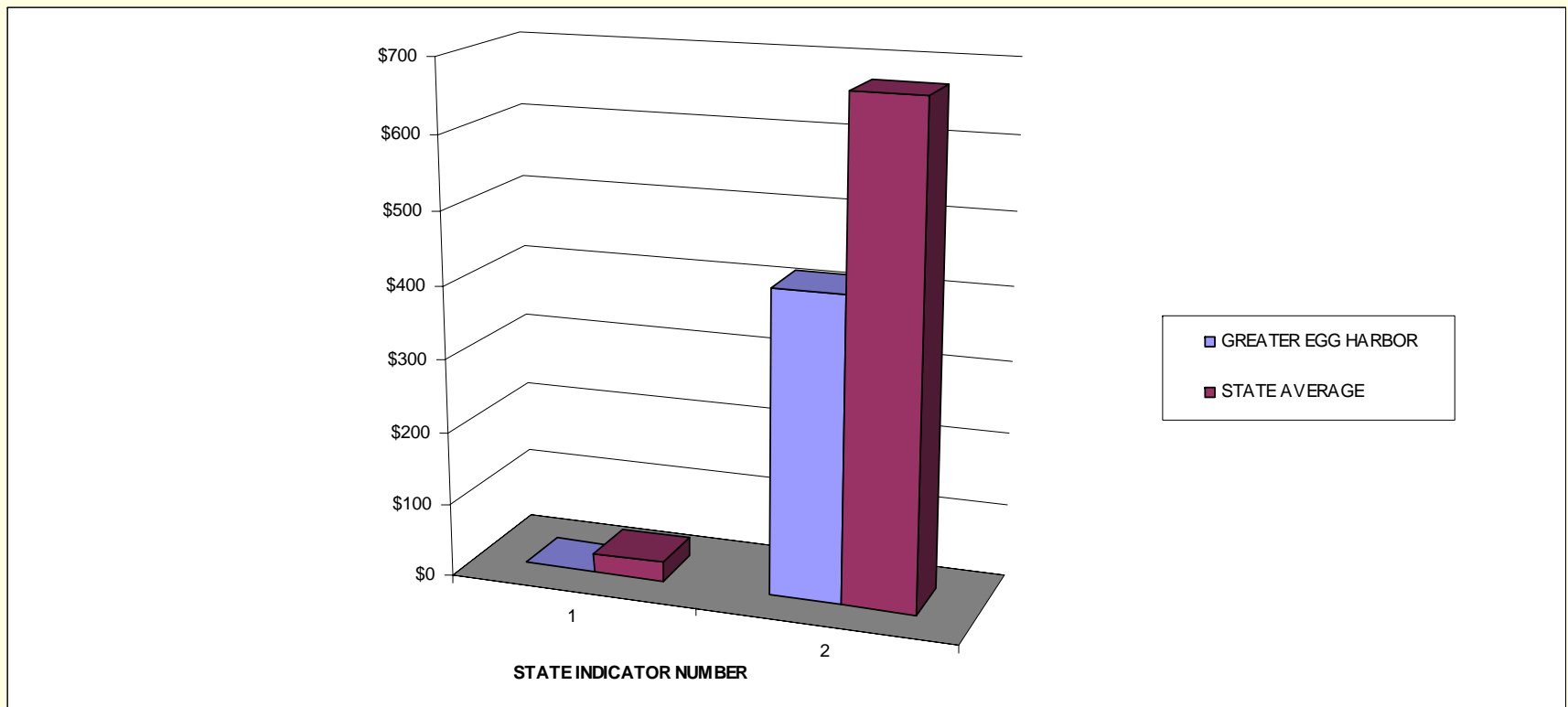
Average Cost Per Pupil Comparison GEHRHSD and NJ State Averages

	Operations/Maintenance Cost Per Pupil	Operations/Maintenance Salary Cost Per Pupil
	1	2
District Cost	1,684	887
State Average	1,648	789



Average Cost Per Pupil Comparison GEHRHSD and NJ State Averages

	Food Service Cost Per Pupil	Athletics/Extra-Curricular Cost Per Pupil
	1	2
District Cost	0	417
State Average	26	673



Ranking Among Regional High School Districts in New Jersey

There are 47 Regional High School Districts in New Jersey.

Greater Egg Harbor Regional High School District Ranks 42 in Total Cost Per Pupil.

District Transportation Rating

Transportation Efficiency Rating

1998-1999	70%
1999-2000	186%
2000-2001	327%
2001-2002	292%
2002-2003	276%
2003-2004	259%
2004-2005	265%
2005-2006	254%
2006-2007	238%

The district transportation efficiency ranks 1st in Atlantic County and 21st highest overall among 413 districts in New Jersey reported.

GREATER EGG HARBOR REGIONAL HIGH SCHOOL DISTRICT

John R. Houck, Sr., President, Board of Education

Margaret Guenther, Vice President, Board of Education

Robert Ross, Chairperson, Finance Committee

Adam C. Pfeffer, Ed.D., Superintendent

Steven Ciccariello, Ed.D., Assistant Superintendent

Thomas P. Grossi, Business Administrator